

Dual uniqueness
meets digital vision



BOA & **COBRA**
VISION VISION

Flexible single and dual channel
Ureterorenoscopes with Sensor Technology



Dual uniqueness meets digital vision

The number of ureterorenoscopies being carried out is continuing to increase rapidly. **BOA vision** and **COBRA vision** together cover the complete range of applications for this treatment.

Its unique small diameter makes **BOA vision** ideal for all urological treatments. As the only flexible dual channel Sensor URS available in the marketplace, **COBRA vision** is particularly recommended for stone therapy. If the two instruments are used together in clinical application, they meet the requirement of the urologist for universal application options and a specification based on high-performance technology.



Image sensor at the tip of the instrument

270°

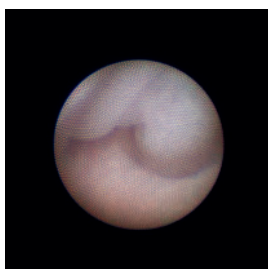
Deflection upward/downward

Sensor technology

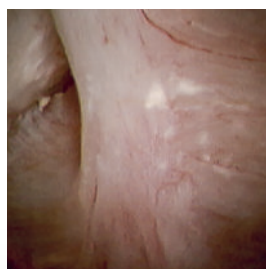
These two Richard Wolf endoscopes have an excellent image sensor at the tip of the instrument. They are therefore in accordance with the most advanced technology.

They yield significant advantages compared with conventional fiber technology.

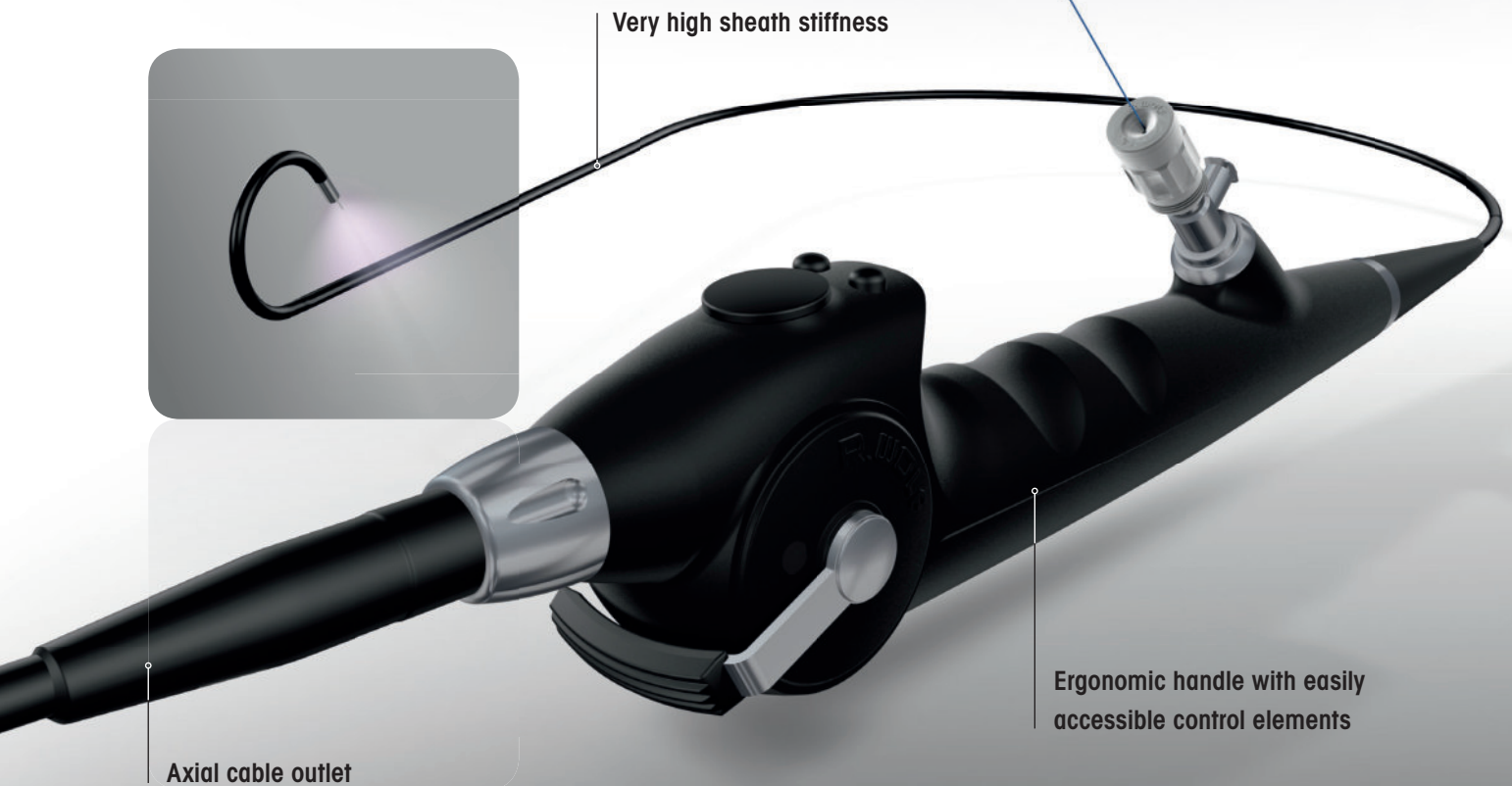
- Brilliant image quality, high-contrast images
- No manual focusing necessary
- No manual white balance necessary



Conventional fiber URS



Sensor URS



Maximum flexibility

- 270° deflection upward/downward, also with appropriate auxiliary instruments and laser fibers
- Reaches virtually any anatomical target

Perfect control

- Very high sheath stiffness for easy introduction and controlled movement
- 1:1 torsional stiffness

More light

- LED technology for homogeneous illumination
- No separate light source and light cable necessary

High level of safety

- Atraumatic, oblique stainless steel tip

Consistently ergonomic

- Axial cable outlet for easy handling
- Low weight by eliminating camera head and light cable for more comfort and precise operation
- Ergonomic handle with easily accessible control elements

Impressive overview

- Endoimage can be enlarged in 6 stages

The multitasking instrument for all-round application



BOA vision is uniquely slimline. This means that the flexible 1-channel Sensor Ureterorenoscope is ideally suited to very slim anatomies, as well as for children, making it incredibly versatile. The latest technology opens up additional perspectives for operating comfort and future-proof technology.

- The only flexible Sensor URS which fits through a 9.5 Fr. access sheath
- Universal single channel Sensor URS
- Large 3.6 Fr. working and irrigation channel for high-performance and continuous unrestricted view
- Slimline and continuously cylindrical sheath
- Optimized channel position for precise working: working channel at 9 o'clock



Suitable for 9.5 Fr. Access Sheath



270° deflection in both directions with inserted auxiliary instrument ...

The specialist for particularly tough challenges

COBRA vision provides perfect performance. As the latest, unique and flexible dual channel Sensor URS on the market, it is predestined for use in stone therapy. The two working channels permit laser lithotripsy and extraction of concretions without having to interrupt the procedure and change auxiliary instruments. This makes **COBRA vision** the specialist for efficiency.

- The only flexible dual channel Sensor URS available in the marketplace
- Laser and irrigation channel 2.4 Fr.
- Laser channel for fibers up to 365 μ m
- Large 3.6 Fr. working and irrigation channel for high irrigation performance and continuous unrestricted view
- Laser shifter controls movement of the laser fiber
- Optimized channel position for precise positioning of the laser fiber and simple collection of stone concretions: laser channel at 9 o'clock, working channel at 6 o'clock

... and even with two auxiliary instruments when using **COBRA vision**.

Visualization

Your view into the future of endoscopic camera systems

BOA vision and **COBRA vision** are operated with the high-performance camera controllers **ENDOCAM Logic HD** and **ENDOCAM Logic HD lite**. A wide range of camera heads expand the application options of the controllers beyond flexible ureterorenoscopy.

ENDOCAM Logic HD lite



ENDOCAM Logic HD



**3CCD HDTV camera head,
format 16:9**

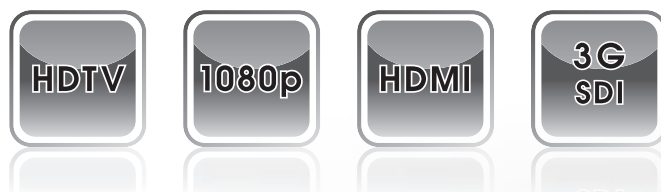
Maximum color fidelity and precise detail, e.g. for laparoscopy

**1CCD HDTV camera head,
format 16:10**

Autoclavable and extremely light-weight for universal application

**Pendulum camera head "PENDUAL",
1CCD HD format 5:4**

Pendulum casing can be easily aligned, also in an axial direction, e.g. for rigid URS



- Software update possible, giving you the ability to add additional features in the future
- Range of high-quality camera heads for diverse applications

Ordering data



COBRA vision flexible Sensor URS Set

comprising:

COBRA vision flexible Sensor URS (7356071 or 7356076), 2x irrigation set V (163910), disposable cleaning brush (pack of 10, 7990001), disposable cleaning brush (pack of 10, 7990003), adapter (163914), leak tester (163.903), pressure equalization valve (163.904), clamping element, orange (pack of 20, 15394144)

Control lever distal, deflection down 73560711

Control lever distal, deflection up 73560761



BOA vision flexible Sensor URS Set

comprising:

BOA vision flexible Sensor URS (7355071 or 7355076), irrigation set V (163910), disposable cleaning brush (pack of 10, 7990001), leak tester (163.903), pressure equalization valve (163.904)

Control lever distal, deflection down 73550711

Control lever distal, deflection up 73550761

Suitable camera controller sets

ENDOCAM Logic HD Controller Set

comprising:

ENDOCAM Logic HD Controller (552510x), manual remote control (5525401), USB flash drive 8GB (56540028), CAN BUS Terminator (5590.989), HDMI/DVI D cable lockable 3.0 m (103843), power cable (2440.03) and DVD License (64360816)

Controller:

2 x HDMI out/2x 3G-SDI out/PIP in/Analog out 55251081

You will find all other equipment versions in our brochure

"ENDOCAM Logic HD – The Future is Logic" (A 668)

ENDOCAM Logic HD Lite Controller Set

comprising: ENDOCAM Logic HD Lite Controller (5525201), manual remote controller (5525401), USB flash drive 8GB (56540028), HDMI/DVI-D cable interlock 3.0 m (103843)

and power cable (2440.03) 55252011

Recommended monitor

LCD Monitor Radiance 26" G2 HB

for a brilliant Endoimage 5370226

also:

26" desktop stand 53700260

Recommended accessories

Adapter with instrument port (stopcock) 7305.782

Sterile universal sealing valve, pack of 5 4712348

Sterisafe DURO A3 Set,

comprising: Sterisafe DURO A3 (382031003),

Toolsafe grid frame (382031101),

for plasma sterilization with disposable filter for H₂O₂

(pack of 100, 382031401) 382032000*

or

for EO, FA with disposable filter for EO and FA

(pack of 100, 382031501) 382032100

Luer sealing cap

for closing the 2nd luer connector 15023205

Adapter

for machine leakage test 163.905

Laser adjustment unit, complete 15369108

for this:

Clamping element, orange (pack of 20) 15394144

Rinsing set V (2 sets recommended for COBRA vision)

with double luer lock tube connector

for flexible ureterorenoscopes 163910

Uro Pump 2224 Set

Pump for irrigation to provide continuous pressure and flow in the upper urinary tract – comprising:

URO Pump 2224 (2224.001), silicone tube set

(8170.223) and power cable (2440.03) 22240011

MegaPulse Desktop 30+ Set

comprising:

MegaPulse Desktop 30+ (2286001), door interlock (2286520), 2 x water filter (2286521), 1 x laser goggles (2286522), fiber stripper (2286523), ceramic scissors (2286524),

key set (2286525) and footswitch (2030122) 22860010

MegaPulse Tower 30+ Set

comprising:

MegaPulse Tower 30+ (2286002), door interlock (2286520), 2 x water filter (2286521), 1 x laser goggles (2286522), fiber stripper (2286523), ceramic scissors (2286524),

key set (2286525) and footswitch (2030122) 22860020

Laser fiber

for kidney stones with MegaPulse 30+ laser systems, packed singly, sterile

200 µm, disposable 487501200

200 µm, reusable 87501200

272 µm, disposable 487501272

272 µm, reusable 87501272

365 µm, disposable 4875013650

365 µm, reusable 875013650

* COBRA vision approved for Sterrad® 100S and V-PRO™

Technical data



Technical data

Distal tip: cylindrical, atraumatic, oblique, distal stainless steel tip 6.6 Fr.

Sheath diameter: 8.7 Fr.

Number of working channels: 1

Working/irrigation channel diameter: 3.6 Fr.

Angulation: 270° upward, 270° downward

Working length: 680 mm

Viewing angle: 90°

Handle: integrated LED illumination, ergonomically contoured handle with axial camera cable

Positioning of the working and irrigation channel to the image: at 9 o'clock

Endoimage: Square, 6-fold size adjustment, automatic light control and focusing

Endocamera: Compatible with all ENDOCAM Logic HD controllers and the ENDOCAM Logic HD lite Controller



Technical data

Distal tip: cylindrical, atraumatic, oblique distal stainless steel tip 5.2 Fr.

Sheath diameter: 9.9 Fr.

Number of working channels: 2

Working/irrigation channel diameter: 3.6 Fr.

Laser/irrigation channel diameter: 2.4 Fr.

Angulation: 270° upward, 270° downward

Working length: 680 mm

Viewing angle: 90°

Handle: integrated LED lighting, ergonomically contoured handle with axial camera cable

Positioning of the working and irrigation channel to the image: at 6 o'clock

Positioning of the laser and irrigation channel to the image: at 9 o'clock

Endoimage: Square, 6-fold size adjustment, automatic light control and focusing

Endocamera: Compatible with all ENDOCAM Logic HD controllers and the ENDOCAM Logic HD lite Controller