

Efficiency in hand



PMORCE
POWER PLUS

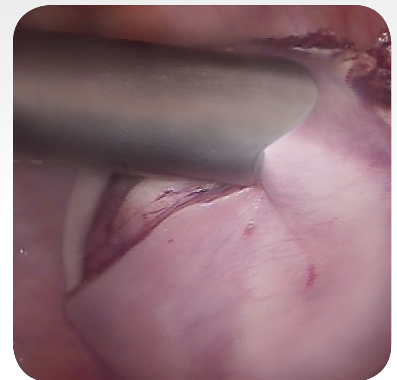
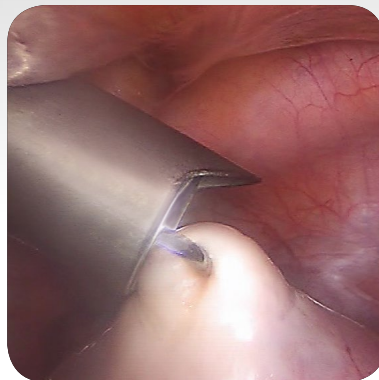
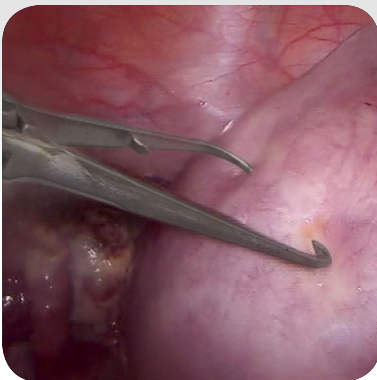
Effective and ergonomic morcellation

Efficiency in hand

MorcePower Plus represents excellent handling and high performance. The optimized concept ensures outstanding user-friendliness with intelligent system structure and makes your everyday clinical work much easier.

The electronic morcellator demonstrates its strengths when it comes to morcellating large amounts of tissue easily, quickly and safely. A powerful motor permits efficient operation in conjunction with the compact, lightweight construction.

- Optional disposable components for optimized cutting.
- Reusable, single-piece protection sleeve or multi-part trocar sleeve with flap valve: the choice is yours.
- Refined seal system ensures stable pneumoperitoneum.
- Nose at the distal end for safe and easy morcellation of large pieces of tissue with "Tissue Feeding" function.





Powerful performance

The high torque electronic motor with brushless technology makes **Morce-Power Plus** powerful and fast.

Simply perfect

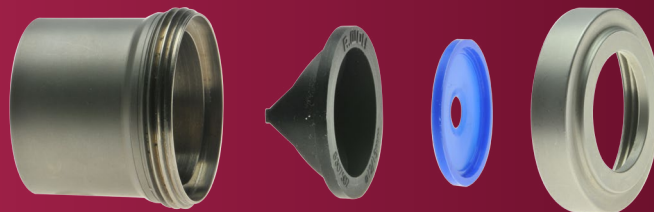
Depending on the requirement, **Morce-Power Plus** can be selected in the versions 12, 15 and 20 mm.

Ergonomic design and control

The ergonomic handgrip for **Morce-Power Plus** facilitates a relaxed hand position and controlled, precise operation in every phase.

Safety with system

The combination of tissue seal and instrument seal enables standard 10 mm hand instruments to be used while maintaining pneumoperitoneum.



The new simplicity

The new single-piece protection sleeves are the ideal option for simple handling and reprocessing.

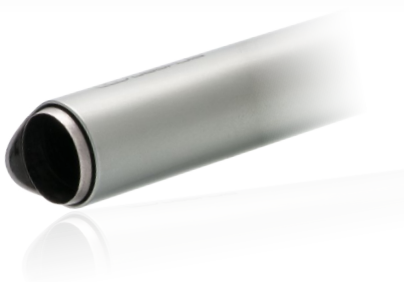
The added value

Aside from its protective function, the trocar sleeve with flap valve also permits the insertion and removal of the morcellator with retention of the pneumoperitoneum.

Everything under control

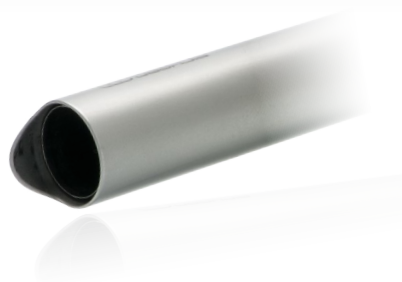
The microprocessor-based controller provides the necessary power.

- Small, compact and lightweight device (120 x 180 x 110 mm)
- Clear operation with LED display
- Rotational speed range from 100 to 1000 rpm
- Variable direction of rotation
- Foot-switch operation with start-up lock to prevent inadvertent operation



Cut function

The cutting tube is shifted forward distal to the insert. The nose of the trocar sleeve supports the peeling process. The underlying tissue is protected.



No-cut function

In order to protect the surrounding tissue, the cutting tube can be retracted back into the trocar sleeve by rotating the morcellator.

Stainless steel cutting tube with integrated sealing unit – sterile, for single use

Perfect sharpness – perfectly calculated

The concept of disposable and reusable components is effective and very practical.

- Economic advantages compared with complete disposable systems
- Substantial reduction in the number of individual parts by comparison with reusable versions.
- Always sharp, always leak-proof, always perfect results.



Cutting tube for disposable use



Cutting tube 12 mm, sterile

Sterile cutting tube 12 mm with sealing unit for MorcePower Plus, packed singly, sterile (pack of 5) 4307012

Cutting tube 15 mm, sterile

Sterile cutting tube 15 mm with sealing unit for MorcePower Plus, packed singly, sterile (pack of 5) 4307015

Complete sets with protection sleeve



12 mm MorcePower Plus Set with protection sleeve

Comprising: Control unit 230/115/100 V (2307101), footpedal (on/off) IP 68 (2307102), electronic motor (80951.0002), morcellator handpiece (8307011), sealing unit complete with tissue and instrument seal Ø 12/15 mm (83075011), protection sleeve 12 mm (83070128), morcellator cutting tube 12 mm (8307012), Trocar 12 mm (83071121) 230700128

15 mm MorcePower Plus Set with protection sleeve

Comprising: Control unit 230/115/100 V (2307101), footpedal (on/off) IP 68 (2307102), electronic motor (80951.0002), morcellator handpiece (8307011), sealing unit complete with tissue and instrument seal Ø 12/15 mm (83075011), protection sleeve 15 mm (83070158), morcellator cutting tube 15 mm (8307015), Trocar 15 mm (83071151) 230700158

20 mm MorcePower Plus Set with protection sleeve

Comprising: Control unit 230/115/100 V (2307101), footpedal (on/off) IP 68 (2307102), electronic motor (80951.0002), morcellator handpiece (8307011), sealing unit complete with tissue and instrument seal Ø 20 mm (83075021), protection sleeve 20 mm (83070208), morcellator cutting tube 20 mm (8307020), Trocar 20 mm (83071201) 230700208

Complete sets with trocar sleeve



12 mm MorcePower Plus Set with trocar sleeve

Comprising: Control unit 230/115/100 V (2307101), footpedal (on/off) IP 68 (2307102), electronic motor (80951.0002), morcellator handpiece (8307011), sealing unit complete with tissue and instrument seal Ø 12/15 mm (83075011), trocar sleeve 12 mm (8307112), morcellator cutting tube 12 mm (8307012), Trocar 12 mm (83071121) 23070012






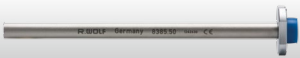





15 mm MorcePower Plus Set with trocar sleeve

Comprising: Control unit 230/115/100 V (2307101), footpedal (on/off) IP 68 (2307102), electronic motor (80951.0002), morcellator handpiece (8307011), sealing unit complete with tissue and instrument seal Ø 12/15 mm (83075011), trocar sleeve 15 mm (8307115), morcellator cutting tube 15 mm (8307015), Trocar 15 mm (83071151) 23070015

20 mm MorcePower Plus Set with trocar sleeve

Comprising: Control unit 230/115/100 V (2307101), footpedal (on/off) IP 68 (2307102), electronic motor (80951.0002), morcellator handpiece (8307011), sealing unit complete with tissue and instrument seal Ø 20 mm (83075021), trocar sleeve 20 mm (8307120), morcellator cutting tube 20 mm (8307020), Trocar 20 mm (83071201) 23070020

Accessories

Optional accessories	
	Ergonomic handle for Morcellator handpiece..... 83070111
	Connector for trocar sleeve 12, 15 and 20 mm as connector for sealing unit 8307501
	Tissue sealing, black (pack of 10) for 12 and 15 mm MorcePower Plus 8307502 for 20 mm MorcePower Plus 83075022
	Instrument sealing, blue (pack of 10) for 12, 15 and 20 mm MorcePower Plus 8307503
	Trocar for trocar sleeve 12 mm, short 83071122 15 mm, short 83071152 20 mm, short 83071202
	Instrument sleeve and extractor 10/5.5 mm, WL = 170 mm 8385.50
	Claw grasping forceps with additional row of teeth, double-action, Ø 10 mm, WL 330 mm, modular system, complete 83954907
	Grasping forceps 2/3-claw Ø 10 mm, WL 330 mm, modular system, complete 83952048
	Myoma screw Ø 10 mm, WL 330 mm 8385.301
	Closure device 10–12 mm 8934.915 12–15 mm 8943.915 15–20 mm 8945.915
	Needle forceps with active suture holding device Ø 2 mm, WL 160 mm, with irrigation connector 8756.201
For reprocessing	
RIWO SYSTEM TRAY 60 mm high, instrument container with inserted peg mats, lid with fixed peg mats, inner dimensions (W x D): 500 x 200 mm 38201.586	
Clean-Spray 500 ml 40900.1000 for this:	
Clean spray connector for cleaning the handpiece 40900.1201 for cleaning the electronic motor 40900.1203	

For general safety instructions and contraindications see GA-A245.