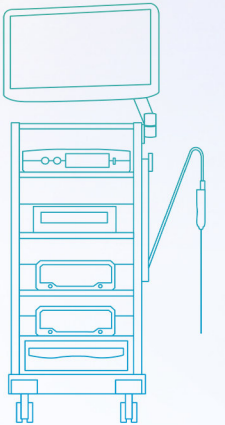
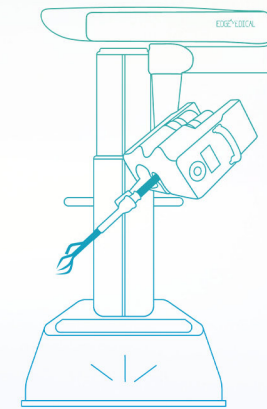
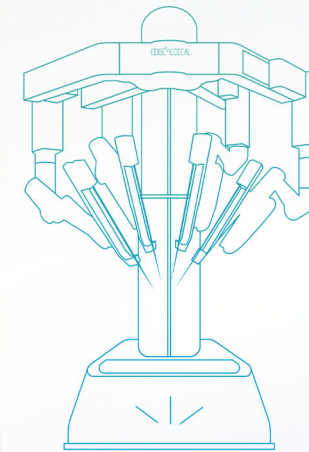
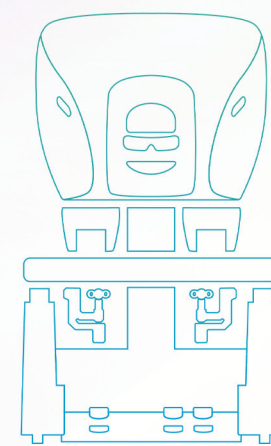


Excellence in Minimally Invasive Surgery

EDGE® Multi-Port Endoscopic Robotic Surgical System



Advancing Surgery, Elevating Care

Shenzhen Edge Medical Co., Ltd.

📍 **Address:** 2B 1901, Phase II, Smart Home, No.76 Baohe Avenue, Baolong Community, Baolong Street, Longgang District, Shenzhen, P.R.China

🌐 **Web:** en.edgemed.cn

✉ **Email:** marketing@edgemed.cn

🌐 **LinkedIn:** Shenzhen Edge Medical Co.

EDGE Medical: Advancing Surgery, Elevating Care

Edge Medical Co., Ltd. was founded on May 4, 2017 in Shenzhen, China. With the mission of "Advancing Surgery, Elevating Care", the company provides high-quality surgical robotic solutions to healthcare organizations around the world, bringing benefits to patients worldwide.

Efficiency

Since its establishment in Shenzhen in 2017, Edge Medical has been growing rapidly. This rapid progress has also led the company to receive investment from a number of renowned organizations such as Sequoia Capital, Temasek, and ObiMed.

Diversity

Edge Medical has a high-level R&D and manufacturing team of nearly 1,000 members. After more than a decade of technology accumulation and precipitation, a complete product portfolio including multi-port laparoscopic surgical robots, single-port laparoscopic surgical robots, and bronchoscopic surgical robots has been established.



Globalization

Edge's employees and partners cover more than 60 countries and regions around the world. We expect to continue to drive surgical advances through technological innovation, accelerate the global adoption of robotic surgery, and enable patients around the globe to receive better treatments and live healthier lives.

Evolution

Edge Medical is the second company in the world to have mastered both multi-port and single-port robotic technology, and has created a new milestone in the history of human surgery by performing transcontinental telesurgery from Rome and Bordeaux, Europe to Beijing, China in 2024.

Multi-Port Robotic Surgical System EDGE® MP1000



Patient Cart

- 4-arm suspension structure
- 2-stage boom for quick docking
- 12-joint arm for wide operating range
- Intraoperative camera arm exchangeable
- Various preset anatomical positions for guidance

Surgeon Console

- Intuitive master-slave operation with hand tremor filtering
- Immersive 3D viewer
- Image 10x magnification
- Ergonomic design
- Intelligent integration control: imaging system, insufflator, telesurgery system



Vision System

- Self-developed imaging system
- 27-inch monitor for OR staff
- ICG fluorescence imaging
- Professional surgical video recorder



PROFESSION--SPECIALTY APPLICATIONS

Professional-grade MP1000 Surgical Robotic System Demonstrates Superior and Consistent Performance.

200+ medical institutions
1000+ doctors and experts
14000+ clinical surgeries verification

Urology

- Radical Cystectomy
- Radical Prostatectomy
- Radical Resection of Renal Pelvis Cancer
- Resection of Renal
- Pelvis Cancer
- Ureteral Reimplantation
- Appendiceal Substitution Ureterotomy
- Retroperitoneal Tumor Resection
- Pyeloplasty
- Adrenalectomy

Gastroenterology

- Total Gastrectomy
- Radical Distal Gastric Cancer
- Rectal Cancer Redical
- Radical Right Hemicolectomy
- Radical Left Hemicolectomy
- Radical Rectal Cancer via Natural Lumen Sampling
- Sigmoid Colon Cancer Radical surgery
- Resection of Gastric Mesenchymal Tumor
- Bilateral Inguinal Hemia Repair

Gynecology

- Total/Extensive Total hysterectomy
- Pelvic Lymph Node Dissection
- Para-Aortic Lymphadenectomy
- Granulomatous Omentectomy
- Bilateral Tubectomy
- Bilateral Oophorectomy
- Ovarian Cyst Removal
- Uterine Fibroid Removal

Hepatic & Pancreatic

- Partial Hepatic Lobectomy
- Partial Hepatic Segmental Resection
- Pancreatic Body Tumor Resection
- Cholecystectomy
- Hepatic Cyst Decapitation
- Choledochotomy
- Duct Jejunostomy

Thoracic

- Left/Right Total Lung Resection
- Lung Resection of Intrinsic Segments
- Lobectomy
- Mediastinal Tumor Resection

Robotic Instrument

The EDGE MP1000 is equipped with a wide range of professional surgical instruments to meet the surgeon's operational needs.

340+

Supportable Surgical Procedures

PRECISION--ROBOTIC FUNCTION

The EDGE MP1000 features innovative robotics technologies and algorithms that make the robot more precise in control, imaging and manipulation. Work with surgeons to make every operation a work of excellence.

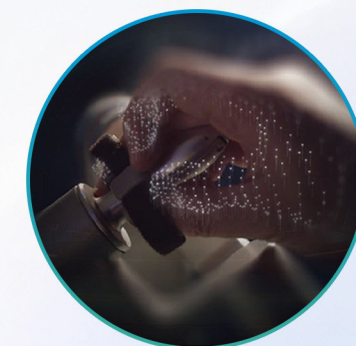
Ergonomic Design

The new ergonomic design of the surgeon console significantly improves immersion and comfort, allowing the surgeon to focus more on the surgical operation.



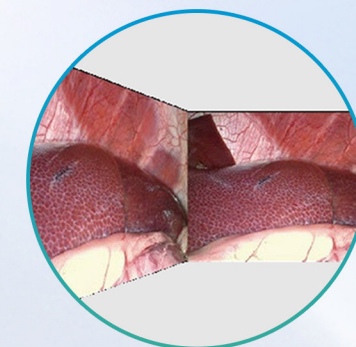
Master-Slave Control

Extremely low master-slave latency and high precision due to EDGE intelligent algorithms allow the surgeon's hands and instruments to move in perfect synchronization, resulting in more delicate operations.



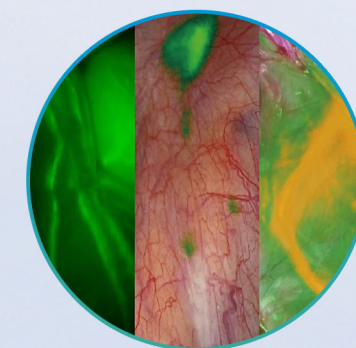
High-Quality 3D Images

The application of AI imaging technology keeps the EDGE image clear, bright and with high contrast. Combined with 10x image magnification, tissue details are rendered more accurately.



Fluorescence Imaging

Self-developed fluorescence system provides more information about the tumor with multiple modes, helping to remove the lesion more completely.



PIONEER--TELESURGERY

Edge is making history

In June 2024, Edge completed a telesurgery from Rome to Beijing, a distance of 8100km between the two locations. This event opens up a new era for telesurgery.



EDGE CLOUD[®] telesurgery system



Low network latency

Image quality and operation feel like local surgery.



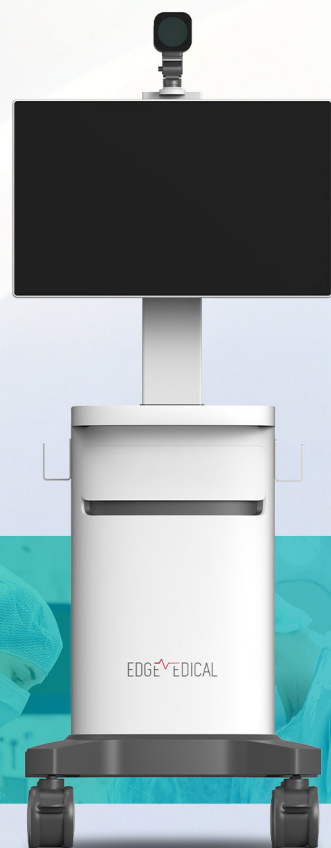
High data security

Adoption of private transmission protocol, which can effectively prevent network attacks.



Dual-connection guarantee

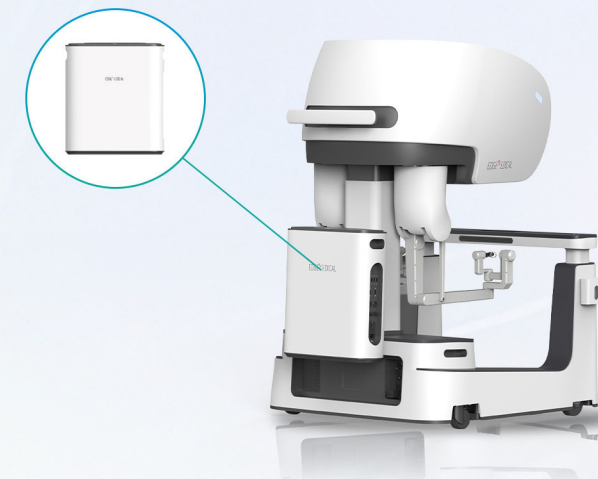
Local console can take over the operation seamlessly anytime to ensure patient safety



POSSIBILITIES--CONFIGURATION OPTIONS

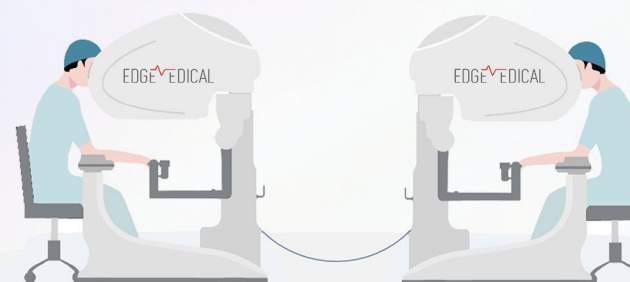
Simulator

- Backpack detachable design
- Extensive VR training courses
- Scoring system and customised training



Dual Consoles

- Remote annotation
- Assignable controlling rights
- Training and education



MSP2000 Robotic Surgery Solution

The Edge MSP2000 features a standardized control system that integrates multi-port, single-port and reducing limitations and providing surgeons with more options.

